

CorrieandCo

INDEPENDENT SALES & LETTING AGENTS



36 Bath Street

Barrow-In-Furness, LA14 1NS

Offers Over £120,000



36 Bath Street

Barrow-In-Furness, LA14 1NS
Offers Over £120,000



A three-storey end-terrace property offering spacious and versatile accommodation across four bedrooms. The home benefits from a private yard to the rear and is conveniently located close to a range of local amenities, shops, and transport links, making it ideal for families or professionals seeking both comfort and convenience.

Welcome to this four-bedroom end-terrace property, ideally positioned in a sought-after location.

Upon entering, you are welcomed into a spacious living room, featuring windows on either side that allow an abundance of natural light to flood the room. The space is finished in neutral décor, complemented by beige carpeting and a central fireplace, creating an attractive and inviting focal point.

Leading through to the kitchen, you will find a range of wall and base units offering ample storage, along with a laminated worktop. The kitchen provides space for a freestanding fridge/freezer and is currently equipped with a four-ring gas hob.

Adjoining the kitchen on one side is a separate dining room, offering generous space for a dining table and chairs, with additional room for further furniture—ideal for family meals or entertaining.

On the opposite side of the kitchen is the utility room, housing a washing machine and dryer, along with additional cupboard storage. This room also accommodates the boiler, keeping it neatly tucked away. The cellar provides additional storage and could be used as a versatile space.

Leading upstairs we have the 4 bedrooms, all of which are ample space and suitable as the perfect retreat from the hustle and bustle of the busy outside world. Finally, the family bathroom is located on the middle floor making it easily accessible for all.

Reception

13'9" x 17'4" (4.20 x 5.30)

Kitchen

10'11" x 10'7" (3.34 x 3.23)

Dining Area

10'5" x 6'7" (3.20 x 2.03)

Utility

7'6" x 6'10" (2.30 x 2.10)

Bathroom

7'8" x 6'11" (2.36 x 2.12)

Bedroom One

14'1" x 17'0" (4.30 x 5.19)

Bedroom Two

11'0" x 10'11" (3.36 x 3.34)

Bedroom Three

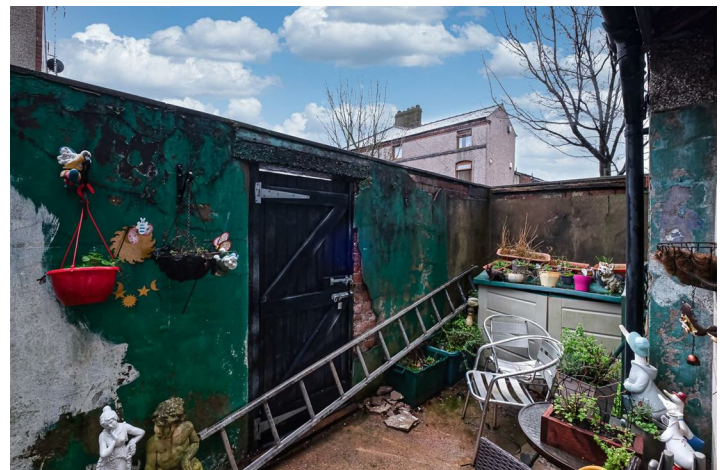
14'1" x 16'11" (4.30 x 5.18)

Bedroom Four

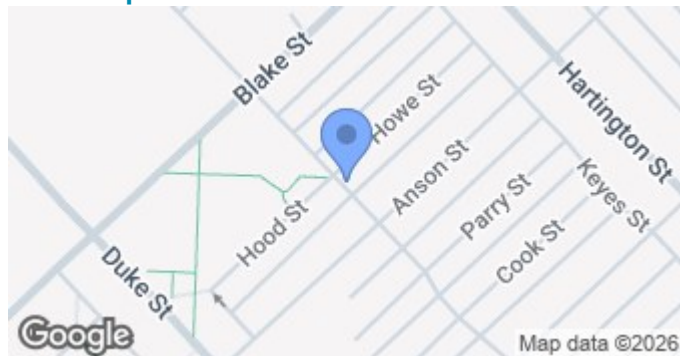
10'10" x 11'1" (3.32 x 3.38)



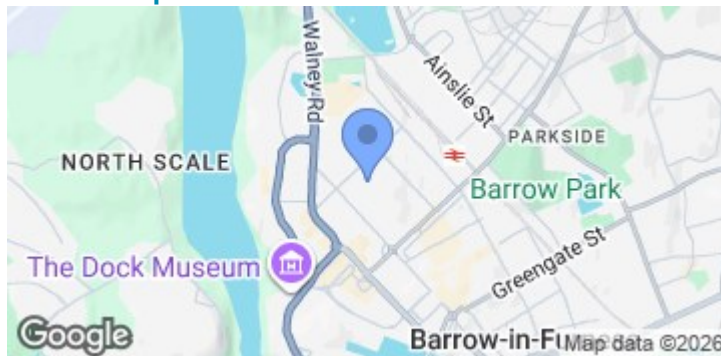
- Ideal For A Range Of Buyers
 - Four Bedrooms
 - Yard To Rear
 - Council Tax Band - A
- Close To Local Amenities
 - Three Storey Property
 - Double Glazing
 - Gas Central Heating



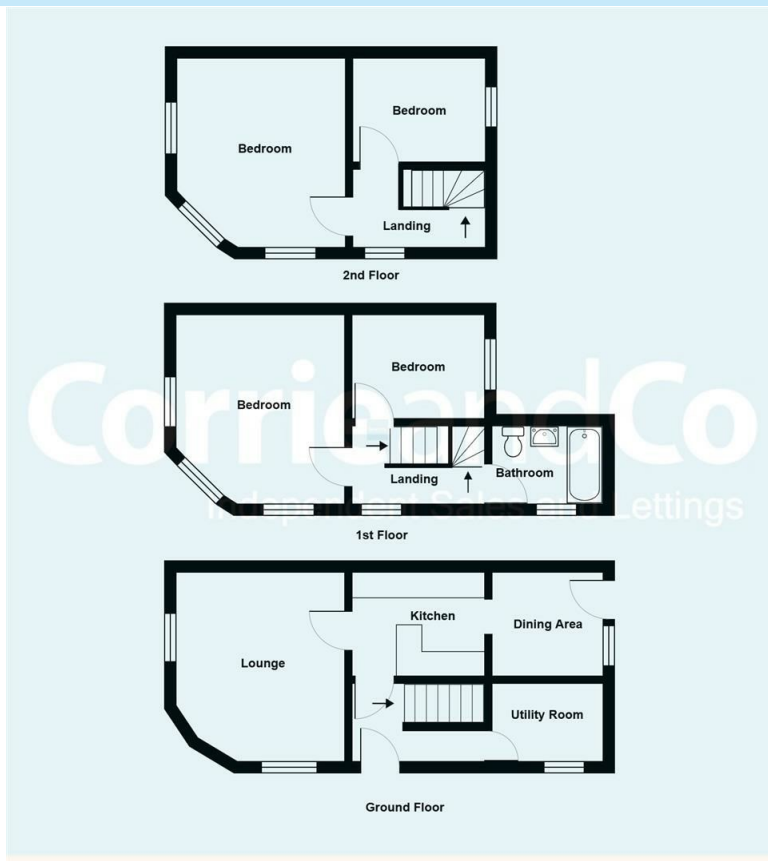
Road Map



Terrain Map



Floor Plan



We are local, family run business who are wholly independent which means we can recommend services to most suit your needs. Our aim is to provide quality advice and expertise at all times, so you can make an informed decision whether buying or selling.

Estate agents are required by law to check a buyers /sellers identity to prevent Money Laundering and fraud. You do have to produce documents to prove your identity or address and information on your source of funds. Checking this information is a legal requirement to help safeguard your transaction, and failing to provide ID could cause delays. Corrie and Co, outsource these checks to speed up the process. The company does charge for such checks, please ask for more information and guidance on associated costs.

To ensure your move is stress free, we can help with Mortgage advice. We work alongside local Solicitors, offering competitive conveyancing services. Ask for further information.

